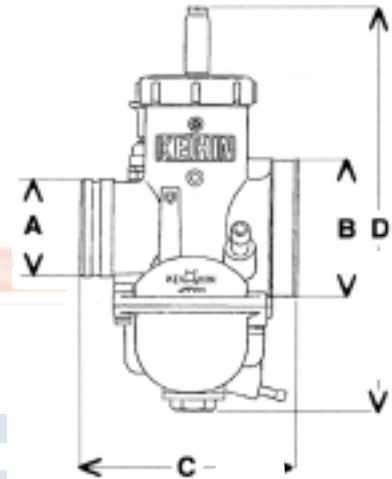


# Keihin PE Parts

Whether you want a tunable high performance carburetor, or you just need a replacement carburetor for your old worn out original carburetor, the PE Series is the right choice.



**Note:**  
\*\*"X00" represents product code stamped on the carb body just above the float bowl.



## Standard PE

Description/ Mark*	Order No.
PE20/ R69	016-122
PE22 /18S	016-123
PE24/ S14	016-126
PE38/ R50	016-124

## PE Carburetor Dimensions

Size (mm)	A	B	C	D
PE20	31	46	83	136.0
PE22	31	46	83	136.0
PE24	31	46	83	142.1
PE38	44	62	95	182.5

## PE Carburetor Throttle Valves

Size	Carb	Order No.
2.0	PE20	021-350
2.5	PE20	021-351
3.0	PE20	021-352
3.5	PE20	021-353
4.0	PE20	021-354
4.5	PE20	021-355

2.0	PE22	021-360
2.5	PE22	021-361
3.0	PE22	021-362
3.5	PE22	021-363
4.0	PE22	021-364
4.5	PE22	021-065

2.0	PE24	021-370
2.5	PE24	021-371
3.0	PE24	021-372
3.5	PE24	021-373
4.0	PE24	021-374
4.5	PE24	021-375
5.0	PE24	021-376
5.5	PE24	021-377
6.0	PE24	021-378

4.0	PE38	021-330
-----	------	---------

## PE 20-24mm Jet Needles

*Nonmenclature*

L= 51mm from base of point to top of needle. - see drawing.

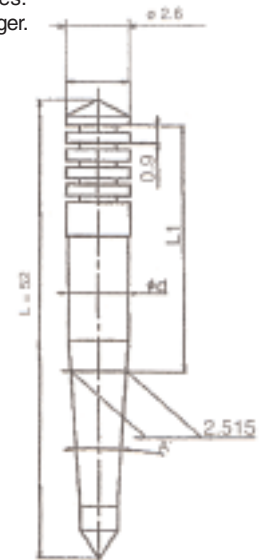
L1 measured to diameter 2.515 - see drawing.

**Jet Needle selection notes:**

1. Taper and diameter are the 2 primary dimensions.
2. Larger diameter is leaner at low speeds.
3. Larger taper angle becomes richer faster as speed increases.
4. If diameter and taper are the same, larger L1 will stay leaner longer.
5. A higher clip position will stay lean longer.

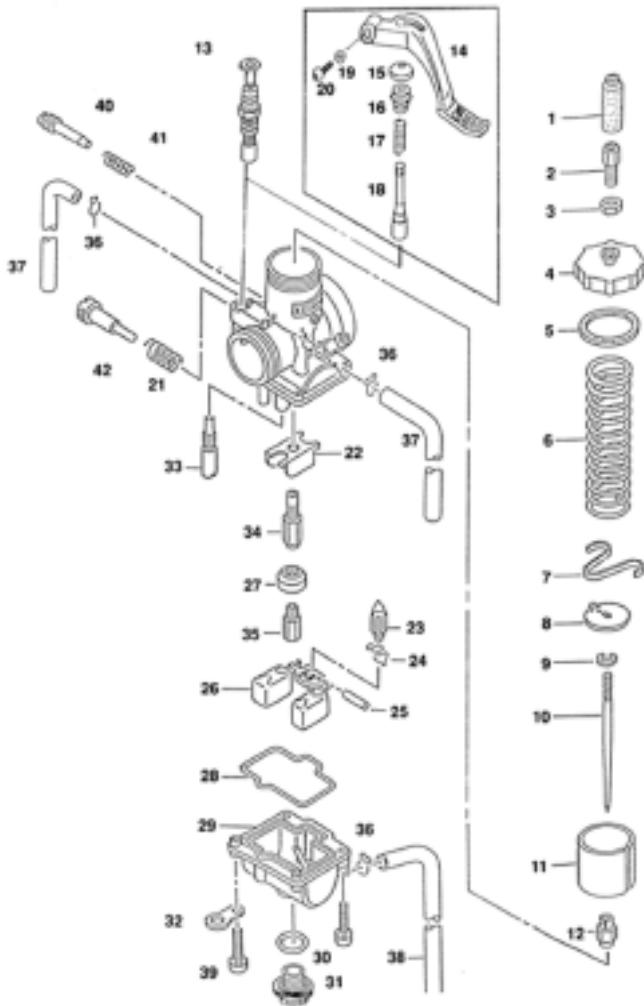
## 1024-36 ( ) H-9900 PE20-24

Mark	Taper A	L1 Length	Diameter D	Order No.
A	2° 00'	21.98	2.485	017-700
B	2° 00'	22.43	2.435	017-701
C	2° 00'	22.43	2.495	017-702
D	2° 00'	21.98	2.495	017-703
E	2° 00'	23.78	2.445	017-704
F	2° 26'	23.84	2.525	017-705
G	3° 00'	23.89	2.515	017-706
H	3° 00'	23.89	2.525	017-707
J	3° 00'	23.89	2.535	017-708
K	3° 00'	23.89	2.505	017-709
L	3° 33'	27.22	2.485	017-710
N	3° 33'	23.92	2.545	017-712
P	3° 33'	27.22	2.475	017-713
Q	3° 33'	27.22	2.525	017-714
R	3° 33'	27.22	2.545	017-715
S	3° 33'	25.72	2.475	017-716



ORDER: 800-998-3529

TECH: 323-728-5407



No.	Description	Keihin No.	Order No.
1	Cap Cable Holder	16118-116-0040	20-24 <b>018-002</b>
		W1597-023-9900	36-38 <b>018-303</b>
2	Cable Adjuster	W9581-59250	20-24 <b>018-005</b>
		W9581-59200	36-38 <b>018-306</b>
3	Nut/Cable Adj	W10793-130-9900	20-24 <b>018-008</b>
		W1793-121-9900	36-38 <b>018-309</b>
4	Tops	G1591-145-9900	20-24 <b>021-565</b>
		G1591-093-9900	36-38 <b>021-781</b>
5	Gasket	W1593-040-9900	20-24 <b>018-320</b>
		W1593-038-9900	36-38 <b>021-782</b>
6	Throttle Spring	G1711-614-9900	20 <b>021-566</b>
		16050-GF5-6710M1	22 <b>021-785</b>
		16050-GF5-7410-M1	24 <b>021-784</b>
7	Clip/Th. Valve Plate	G1711-484-9900	36-38 <b>021-783</b>
		16114-GF5-0040	20-24 <b>021-567</b>
8	Throttle Valve Plate	W9574-35000	36-38 <b>018-341</b>
		W1506-028-9900	24 <b>018-344</b>
9	Clip/Jet Needle	G1506-017-9900	36-38 <b>021-786</b>
		16115-169-0040	20-38 <b>018-033</b>
10	Jet Needle	N427-46-□□□	20 <b>Pg. 136</b>
		N427-48-□□□	36 <b>Pg. 135</b>
11	Throttle Valve	G1502-04G-9900	38 <b>021-330</b>
12	Needle Jet	16164-169-0040	20-24 <b>018-560</b>
13	Choke Valve	16046-KA5-7710-M1	36-38 <b>021-584</b>
14	Choke Lever	W1271-031-9901	20-24 <b>021-568</b>
15	Rubber Cap	16148-PJ7-0051	20-24 <b>021-569</b>
16	Choke Lever Holder	W1551-035-9901	20-24 <b>018-362</b>
17	Choke Valve Spring	W1711-403-9900	20-24 <b>018-372</b>
18	Choke Valve	W1275-020-9900	20-24 <b>018-358</b>
19	Collar	W1704-362-9900	20-24 <b>021-570</b>
20	Screw	93500-04012-1H	20-24 <b>018-211</b>
21	Spring	16052-KG8-9010-M1	20-24 <b>018-382</b>
22	Buffer Plate	G1711-286-9901	36-38 <b>018-383</b>
		G1130-004-9900	36-38 <b>021-585</b>
23	Float Valve	W1362-020-9901	20-24 <b>018-389</b>
		W1362-024-9900	36-38 <b>021-787</b>
24	Clip/Float Valve	W1782-013-9900	20-38 <b>018-104</b>
25	Float Pin	W9525-25250	20-38 <b>018-670</b>
26	Float	W1310-067-9902	20-22 <b>018-396</b>
		W1310-080-9901	24 <b>018-397</b>
		G1310-059-9901	36 <b>021-789</b>
27	Jet Holder	G1310-058-9911	38 <b>021-788</b>
		16168-GC4-7010-M1	20-24 <b>018-402</b>
28	Gasket/F.Bowl	16168-KA5-0040	36-38 <b>018-403</b>
		W1354-042-9900	20-24 <b>018-406</b>
29	Float Bowl	16163-ND4-7510-M1	36 <b>018-113</b>
		W1350-239-9903	20-22 <b>018-409</b>
		W1350-291-9901	24 <b>021-791</b>
30	Plug Screw Washer	G1350-189-9910	36-38 <b>021-790</b>
		16173-001-0040	20-38 <b>018-664</b>
31	Plug Screw	16162-ND4-7511-M1	20-38 <b>018-128</b>
32	Anchor Plate	16179-428-6711-M1	36-38 <b>018-119</b>
33	Slow Jet	N424-21-□□□	20-22 <b>Pg. 138</b>
		N424-32-□□□	24 <b>Pg. 138</b>
		N424-22-□□□	36 <b>Pg. 138</b>
34	Needle Jet	G1413-34A-9900	20&24 <b>021-793</b>
		16165-GC4-7010-M1	22 <b>021-794</b>
		16164-KA5-0041	36-38 <b>021-792</b>
35	Main Jet	99101-357-□□□	20-38 <b>Pg. 137</b>
36	Clip/Pipe	W9535-35000	20-38 <b>018-098</b>
37	Pipe	95003-07027-31	20-24 <b>021-571</b>
		95003-07039-31	36-38 <b>021-795</b>
38	Pipe	95003-07030-31	20-24 <b>021-572</b>
		95003-05030-31	36-38 <b>021-796</b>
39	Screw/F.Bowl	93892-04016-18	20-38 <b>018-122</b>
40	Air Adj. Screw	16080-KG8-9010-M1	20-22 & 36-38 <b>021-573</b>
		W1446-135-9900	24 <b>021-797</b>
41	Spring	W1711-416-9900	20-38 <b>018-090</b>
42	Th. Stop Screw	W1536-120-9900	20-22 <b>021-574</b>
		W1536-105-9901	24 <b>018-378</b>
		G1536-065-9900	36-38 <b>018-379</b>

## PE Carburetors Standard Jetting

Description	Main Jet	Slow Jet	Thr. Valve	Jet Needle
PE20	100	58	4.0	36S00
PE22	102	40	3.5	N94D
PE24	115	52	3.0	36S00
PE36	160	60	3.0	48-DGJ
PE38	160	60	3.5	48-AJM